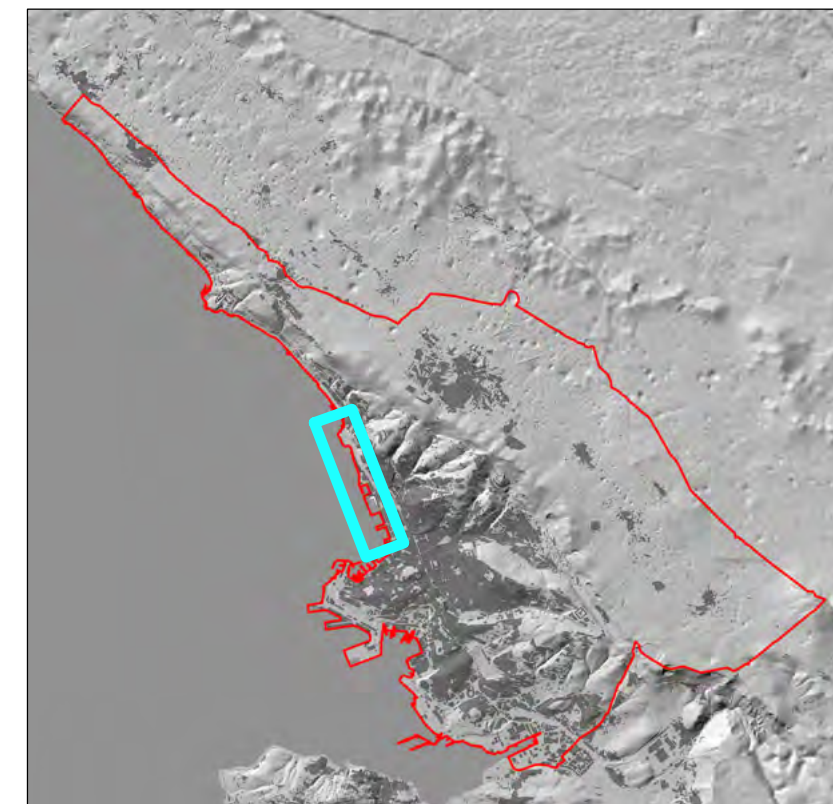




VARIANTE N° 6 AL P. R. G. C.
ACCORDO DI PROGRAMMA PORTO VECCHIO



**Dirigente Dipartimento
e Progettista**
dott. ing. Giulio Bernetti

Estensori
dott. Roberto Prodan
dott.pian. Paolo De Clara
geom. Paolo Cernivani
per.ind. Luca Kerstich
m.o Mauro Pennone
per.ind. Andrea Zacchigna



Aree edificate e aree urbanizzate

Vigente - Proposta



Maggio 2020

Scala 1:10.000

Vigente

-  Aree edificate
-  Aree urbanizzate

Proposta

-  Aree edificate
-  Aree urbanizzate

